



MODEL BUILDING & ENGRAVING SET

User Guide & Warranty



After Sales Support

Now you have purchased a Power Craft product you can rest assured in the knowledge that as well as your 3 year parts and labour warranty you have the added peace of mind of dedicated helplines and web support.

AFTER SALES SUPPORT

UK / N.IRELAND HELPLINE NO 0870 112 1948

REP. IRELAND HELPLINE NO 0800 32 929292

WEB SUPPORT www.clickspares.co.uk

MODEL NUMBER: TBES-40/2009UK

Contents

- 03 Introduction
- 05 General Information and Safety Instructions
- 09 Assembly and Parts List
- 10 Application
- 12 Features
- 13 Instructions
- 15 FAQ
- 15 Other Useful Information
- 17 Warranty Card

Introduction

Congratulations on choosing to buy a PowerCraft product.

By doing so you now have the assurance and peace of mind that comes with purchasing a product made by one of Europe's leading manufacturers.

All products brought to you by PowerCraft are manufactured to the highest standards of performance and safety, and, as part of our philosophy for customer service and satisfaction, are backed by our comprehensive 3 Year Warranty.

We hope you will enjoy using your purchase for many years to come

General information and safety instructions



Carefully read this manual before using the machine. Make sure that you know how to operate it. Maintain the machine in accordance with the instructions to make sure it functions properly. Keep this manual with the machine.

Read all safety warnings and all instructions. Failure to follow all warnings and instructions may result in electric shock, fire and/or serious injury. Save all warnings and instructions for future reference. The term "power tool" in the warnings refers to your mains operated (corded) power tool or battery operated (cordless) power tool.

1. WORK AREA

- Keep work area clean and well lit. Cluttered and dark areas invite accidents.
- Do not operate power tools in explosive atmospheres, such as in the presence of flammable liquids, gases or dust. Power tools create sparks which may ignite the dust or fumes.
- Keep children and bystanders away while operating a power tool. Distractions can cause you to lose control.

2. ELECTRICAL SAFETY



Always check that the power supply corresponds to the voltage on the rating plate. Your machine is double insulation in accordance with EN50144. Therefore no earth wire is required.

Replacing cables or plugs

Immediately throw away old cables or plugs when they have been replaced by new ones, it is dangerous to insert the plug of a loose cable in the wall socket.

Using extension cables

Only use an approved extension cable suitable for the power input of the machine the minimum cable size is 1.5mm². When using a cable reel always unwind the reel completely.

- Power tool plugs must match the outlet. Never modify the plug in any way. Do not use any adapter plugs with earthed (grounded) power tools. Unmodified plugs and matching outlets will reduce risk of electric shock.
- Avoid body contact with earthed or grounded surfaces such as pipes, radiators, ranges and refrigerators. There is an increased risk of electric shock if your body is earthed or grounded.
- Do not expose power tools to rain or wet conditions. Water entering a power tool will increase the risk of electric shock.

- Do not abuse the cord. Never use the cord for carrying, pulling or unplugging the power tool. Keep cord away from heat, oil, sharp edges or moving parts. Damaged or entangled cords increase the risk of electric shock.
- When operating a power tool outdoors, use an extension cord suitable for outdoor use. Use of a cord suitable for outdoor use reduces the risk of electric shock.
- If operating a power tool in a damp location is unavoidable, use a residual current device (RCD) protected supply. Use of an RCD reduces the risk of electric shock.

3. PERSONAL SAFETY

- Stay alert, watch what you are doing and use common sense when operating a power tool. Do not use a power tool while you are tired or under the influence of drugs, alcohol or medication. A moment of inattention while operating power tools may result in serious personal injury.
- Use safety equipment. Always wear eye protection. Safety equipment such as dust mask, non-skid safety shoes, hard hat, or hearing protection used whenever conditions require will reduce personal injuries.
- Avoid accidental starting. Ensure the switch is in the off position before plugging in. Carrying power tools with your finger on the switch or plugging in power tools that have the switch on invites accidents.
- Remove any adjusting key or wrench before turning the power tool on. A wrench or a key left attached to a rotating part of the power tool may result in personal injury.
- Do not overreach. Keep proper footing and balance at all times. This enables better control of the power tool in unexpected situations.
- Dress properly. Do not wear loose clothing or jewelry. Keep your hair, clothing and gloves away from moving parts. Loose clothes, jewelry or long hair can be caught in moving parts.
- If devices are provided for the connection of dust extraction and collection facilities, ensure these are connected and properly used. Use of these devices can reduce dust related hazards.

4. POWER TOOL USE AND CARE

- Do not force the power tool. Use the correct power tool for your application. The correct power tool will do the job better and safer at the rate for which it was designed.
- Do not use the power tool if the switch does not turn it on and off. Any power tool that cannot be controlled with the switch is dangerous and must be repaired.
- Disconnect the plug from the power source before making any adjustments, changing accessories, or storing power tools. Such preventive safety measures reduce the risk of starting the power tool accidentally.
- Store idle power tools out of the reach of children and do not allow persons unfamiliar with the power tool or these instructions to operate the power tool. Power tools are dangerous in the hands of untrained users.
- Maintain power tools. Check for misalignment or sticking of moving parts, breakage of parts and any other condition that may affect the power tool's

operation. If damaged, have the power tool repaired before use. Many accidents are caused by poorly maintained power tools.

- Keep cutting tools sharp and clean. Properly maintained cutting tools with sharp cutting edges are less likely to stick and are easier to control.
- Use the power tool, accessories and tool bits etc., in accordance with these instructions and in the manner intended for the particular type of power tool, taking into account the working conditions and the work to be performed. Use of the power tool for operations different from intended could lead to a hazardous situation.

5. SERVICE

Have your power tool serviced by a qualified repair person using only identical replacement parts. This will ensure that the safety of the power tool is maintained.

SPECIFIC SAFETY WARNINGS

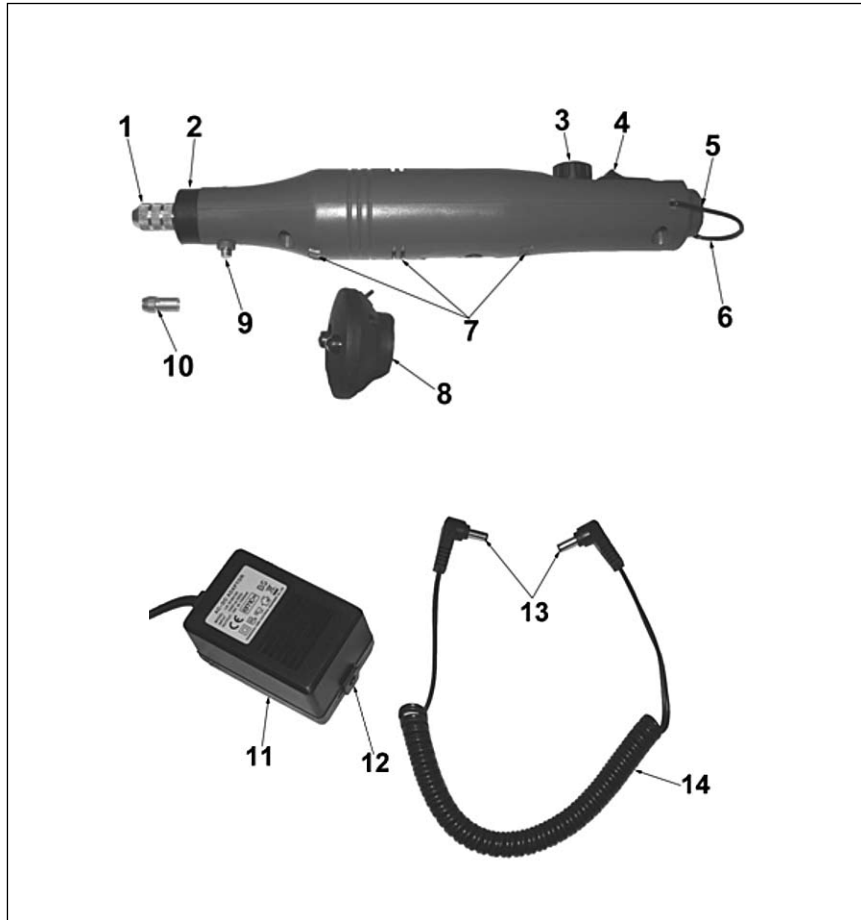
- Check that the rated speed of the accessories is equal to or greater than the rated speed of the grinder.
- Handle and store grinding accessories with care.
- Inspect tool and accessories before operation. Do not use chipped, cracked or otherwise defective products as this may shatter the work piece and may cause personal injury.
- Ensure that mounted wheels and points are fitted according to manufacturer's instructions before operation.
- After mounting an accessory properly, turn on the tool and run it idle for 30 seconds in a safe position.
- Stop immediately if there is considerable vibration or if other defects are detected. Unplug and check the machine to determine the cause.
- Do not use separate reducing bushing or adapters to adapt large hole abrasive wheels.
- Ensure that sparks resulting from use do not create a hazard. For example, but they do not hit surrounding persons, or ignite flammable substance.
- Ensure that the vent is free of dust during operation, unplug tool before cleaning dust from vent. To avoid damaging the inner components, do not clean the tool with metal material.
- Always wear necessary safety equipment such as eye protection, hearing protection and gloves.
- Note that the work head may continue rotating after the tool is turned off.



WARNING! On the upper side of the tool there is a spindle-lock button. Do not press the spindle-lock button while the tool is running.

Assembly and Parts List

fig.A



Description (fig.A)

1. Collet chuck grip
2. Lock nut
3. Speed adjustor
4. On/off switch
5. Socket
6. Hook
7. Ventilation holes
8. Lock nut with LED
9. Spindle lock button
10. Collet
11. Adaptor
12. Socket
13. Plug
14. Connection wire

Package

- Remove all packing materials
- Remove remaining packaging and transit supports (if existing)
- Check the completeness of the packing content
- Check the appliance, the power cord, the power plug and all accessories for transportation damages.
- Keep the packaging materials as far as possible till the end of the warranty period. Dispose it into your local waste disposal system afterwards.



WARNING Packing materials are no toys! Children must not play with plastic bags! Danger of suffocation!



When parts are missing or damaged, please contact your dealer.

Application

The mini grinder is suitable for model building and engraving materials, sanding, shaping of wood and fiberglass, grinding - cutting - polishing metals etc.

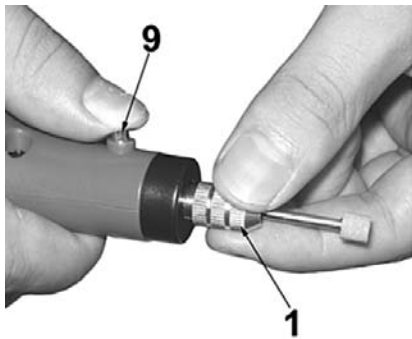
MOUNTING ACCESSORIES

1. CHANGING THE ATTACHMENT TOOLS

- The small accessory attachments such as the grinding stones or cutting discs may be attached directly to the multi-tool.

 Remove the plug from the socket

Attaching small parts directly to the multi-tool



- Turn the collet grip (1) slightly while holding down the spindle-lock button (9) until the button engages.
Never press down on the spindle-lock button while the tool is running.
- Change the attachment tool. Always tighten attachment tools as much as possible. Shafts which extend out from the collet will cause wobbling.
- Tighten the collet chuck grip. To replace the collet chuck, remove the collet chuck grip and replace the chuck

ACCESSORIES

- **Grinding bits**
Use: sharpening, deburring, rust removal, shaping
Tip: clean and shape the grinding bits with the honing stone.



- **Grinding points**
Use: for fine engraving of various materials.
Tip: work on metals at a low speed and process as if it were hardwood.



- **Sander**
Use: sanding, smoothing and shaping wood and fiberglass.



- **Grinding stone**
Use: cleaning and shaping grinding stones.



- **Polishing discs**
Use: polishing metals and grinding stones.
Attention: only polish with the sides of the disc. The head of the stone would leave scratches on the work piece.



- **Cutting discs**
Use: cutting or slitting bolts, screws, sheet metal, thin wood and plastic



- **Orbital sander**
Use: sanding, smoothing and shaping wood and fiberglass


Features

Technical specifications

ADAPTOR:		
INPUT	Voltage/Frequency	230V~50Hz
OUTPUT	Voltage	18V=
	Current	1000mAh
ROTARY TOOL:		
	Variable speed (no-load)	5000-20000min ⁻¹
	Operating voltage	18V=
	Weight	kg

Noise emission values

Level of sound pressure measured according to relevant standard.

 The machine may exceed 85 dB(A) at the workplace. In this case, noise protection measures need to be introduced to protect the user.

Sound pressure level L _{pa}	71 dB(A)
Sound power level L _{wa}	82 dB(A)

Weighted root mean square acceleration value according EN 60745 (ISO5348).

Vibration	3.5 m/s ²
-----------	----------------------

Instructions

1. PREPARATION FOR USE

- Insert one plug (13) of connection wire (14) to the Adaptor' socket (12) and assemble the other in the socket of tool (5).



Warning: With the multi-tool turned off, connect it to a mains socket. The nameplate specification must match the power supply you connect to.



2. ON/OFF SWITCH

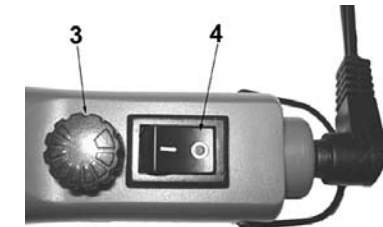
- **Warning:** with the multi-tool turned off, connect it to a mains socket. The nameplate specification must match the power supply you connect to.

Turning ON:

Turn the power button (4) to position I

Turning OFF:

Turn the power button (4) to position O



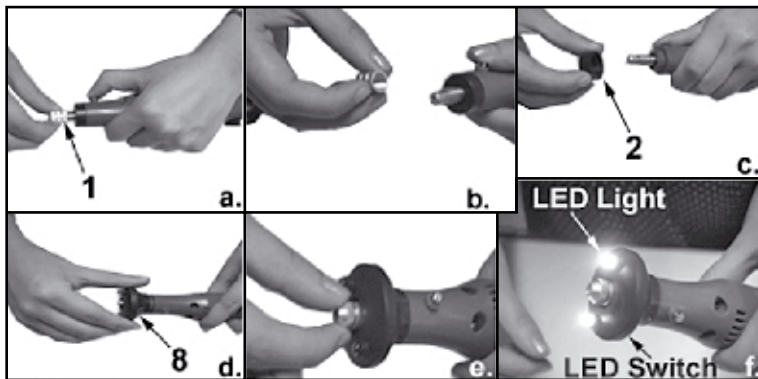
3. SETTING THE SPEED

- The multi-tool speed is continuously adjustable. Always start from the lowest speed and then increase the speed to the desired level.
- Set the speed control dial (3) to fit the job. To achieve the best results when working with different materials the speed of the tool should be regulated, it is advised to use a piece of practise material. Vary speed to find the best speed for the accessory you are using and the job to be done.
- Select low speed when operating on plastic materials, otherwise the friction heat may damage the material. Hard woods, metal and glass require high speed operation. Drilling should also be done at high speeds. The work speed is determined not only by the accessory in use, but also by the work-piece material. The perfect speed can be found by practice on the odd side of scrap material.

FAQ

4. LED LIGHT

- If you work in dark condition and want to see clearly the work area, please take off collet chuck grip (1) and lock nut (2) (See Fig. 'a.', 'b.' and 'c.'). assemble lock nut with LED (8) in the packing box (See Fig. 'd.'). finally tighten the collet chuck grip by your hand. (See Fig. 'e.')
- Turn the LED switch to position "I", the LED light is on. (See Fig. 'f.'). Turn the switch to position "0", the light is off.



What is a mini-grinder used for?

The mini grinder is used for model building and engraving. It can engrave various materials, sanding, shaping of wood and fiberglass, grinding – cutting – polishing metals etc...

How does a mini-grinder work?

Choose the correct accessory that is needed for the material you want to work on. Put this into the collet of the mini-grinder, and choose the correct speed. Depending on the material you will have to adjust the speed. You can now start working with your mini-grinder.

Other useful information

Maintenance and care

Keep the ventilation slots (7) clear and clean, use a soft brush to clean the ventilation slots. If required, wipe the multi-tool clean with lint-free cloth. Do not use any caustic agents for this. Never immerse the multi-tool in water or other liquids

Environment



Should your appliance need replacement after extended use, do not discard it with the household rubbish but dispose of it in an environmentally safe way.
Waste produced by electrical machine items should not be handled like normal household rubbish. Please recycle where recycle facilities exist. Check with your Local Authority or retailer for recycling advice.

Warranty

EC DECLARATION OF CONFORMITY



VARO N.V. - Joseph Van Instraat 9 - B2500 Lier - Belgium, declares that product: Mini Grinder / trade mark: PowerCraft / model: TBES-40 is in conformity with the essential requirements and other relevant provisions of the applicable European Directives, based on the application of European harmonized standards. Any unauthorized modification of the apparatus voids this declaration.

European Directives, and their amending directives;
2006/95/EC The Low Voltage Directive
2004/108/EC The Electromagnetic Compatibility Directive
98/37/EC The Machinery Directive

European harmonized standards, and their amendments;
EN60745-1 : 2006 EN60745-2-1 : 2003
EN55014-1 : 2006 EN55014-2 : 1997
EN61000-3-2 : 2006 EN61000-3-3 : 1995

The undersigned acts on behalf and under the power of attorney of the company management,

Philippe Vankerhove
Certification Manager 15/10/2008

WARRANTY CERTIFICATE



Year of manufacture: 2009 MINI-GRINDER 8982 TBES-40/2009UK

Congratulations! You have made an excellent choice with the purchase of this Quality product. Our commitment to quality also includes our service. Should you, contrary to expectations, experience defects due to material or manufacturing faults during private use within 36 months of the date of purchase we shall be liable for warranty in accordance with statutory warranty regulations, provided that: - The device was not put to any use other than the intended. - Was not overloaded. - Was not used with the wrong accessories. - Repairs where not carried out by any other than the authorised workshop. The warranty certificate is only valid in connection with the receipt. Please keep both in a safe place. The warranty does not affect your statutory rights.

The product is guaranteed for a period of three years beginning on the day of purchase. Keep your purchase receipt safe as proof of the date of purchase. The guarantee period can only be extended for the duration of any repair required.

During the warranty period, defective devices can be sent to the service address stated at the end of this booklet. Do contact service helpline first for advice and information on how to return the item. We will, at our discretion either repair or exchange the device in accordance with warranty legislation.

Please include the following when sending in your product for repair:

1. The receipt (proof of purchase)
2. This warranty certificate with your name, address, contact details and a fault description completed overleaf.

If the original receipt is not enclosed the repair will be charged for in all cases. After the warranty has expired you can still send defective devices for repairs to the address at the end of this booklet. Quotes as well as repairs after warranty period are to be paid for in all cases. Ensure the product is sent well packed as no responsibility can be accepted for items lost or damaged in transit. This warranty does not affect your statutory rights.

If you are requested by the manufacturer to return the item for repair please complete the enclosed section and send it together with your product and your receipt (proof of purchase) to the service address shown below.

Name: _____

Address: _____

Contact Telephone No.: _____

E-mail: _____

Location of purchase: _____

Fault Description: _____



In order to deal with your enquiry as quickly and efficiently as possible, we ask you to send your enquiry by email. Do not forget to include your name, address and a daytime telephone number.

Alternatively, you can contact our customer helpline on the number given below.

Office hours are as follows:

Mon-Thurs: 7.30 -11.00am & 12.00 - 4.00pm, Fridays: 7.30am -12.30pm

Service United Kingdom / N.Ireland:

Click Spares - Varo

PO Box 457

BS23 9AD Weston-super-Mare

Freephone Tel: 0870 112 1948

Fax: 0870 160 1491

Email: varo@clickspares.co.uk

Service Rep.Ireland:

Click Spares - Varo

Freephone Tel: 0800 32 929292

Email: varo@clickspares.co.uk